



## Technical Data SE Enclosures

IP44

IP56



- High Strength Polymer Material
- IP44 to IP56 Protection Rating
- Double-Insulated to CEI 64-8 Standard
- CEI 23/48 Compliant for Household Use
- Resistant to Chemical Agents
- Quick-Release Hinged Lid (SE09 & SE10)
- Stainless Steel Locking Screws (SE04 to SE08)
- Pre-Moulded DIN Rail Slots
- 20mm<sup>2</sup> Gland Knockouts (SE02 & SE03)
- Solid Wall (SE04 to SE10) for Flexible Gland Positioning

### ORDERING INFORMATION

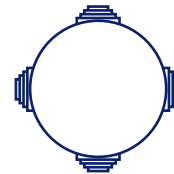
Part Number	Description	Pack Qty	Carton Size
SE02	Round enclosure, clip-on lid inc. glands	5 pcs	160 pcs
SE03	Enclosure, clip-on lid, inc. glands	5 pcs	160 pcs
SE04	Enclosure, screw lid	1 pc	100 pcs
SE05	Enclosure, screw lid	1 pc	100 pcs
SE06	Enclosure, screw lid	1 pc	45 pcs
SE07	Enclosure, screw lid	1 pc	32 pcs
SE08	Enclosure, screw lid	1 pc	10 pcs
SE09	Enclosure, hinged screw lid	1 pc	6 pcs
SE10	Enclosure, hinged screw lid	1 pc	6 pcs

### DIMENSIONS (mm)

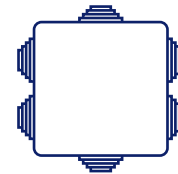
Part Number	Height	Width	Depth
SE02	Ø 80 x 40		
SE03	80	80	50
SE04	100	100	50
SE05	80	120	50
SE06	110	150	70
SE07	140	190	70
SE08	190	240	90
SE09	220	300	120
SE10	300	380	120

### GENERAL INFORMATION

Enclosure Material	High Strength Polymer
Self-Extinguishing Factor	G.W. 650°
IK Factor at 20°C	IK04 / IK08
Approvals	CE
Compliance	CEI64-8, CEI 23/48, CEI EN 60 670-1, CEI EN 60 670-202, RoHS



SE02



SE03

SE02 & SE03 enclosures are supplied with pre-drilled 20mm<sup>2</sup> gland knockouts with soft rubber plugs that can be pierced for a cable to pass through, or removed if a separate cable gland is to be used.

### TECHNICAL SPECIFICATION

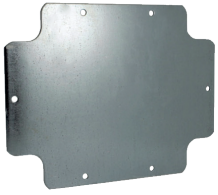
Part Number	SE02	SE03	SE04	SE05	SE06	SE07	SE08	SE09	SE10
IP Protection Rating	IP44	IP44	IP56	IP56	IP56	IP56	IP56	IP56	IP56
Stainless Steel Locking Screws	-	-	Yes	Yes	Yes	Yes	Yes	-	-
Plastic Locking Screws	-	-	-	-	-	-	-	Yes	Yes
Lid Type	Clip-on	Clip-on	Screw	Screw	Screw	Screw	Screw	Screw	Screw
Hinged Lid	-	-	-	-	-	-	-	Yes	Yes
Cable Gland Knockouts	4 x 20mm	6 x 20mm	-	-	-	-	-	-	-

For more information, email [info@stag-electrical.com.au](mailto:info@stag-electrical.com.au)



# Technical Data

## SE Enclosure Metal Base Plates



- Base Plates for SE07 - SE10 Enclosures
- 1.5mm Zinc -Coated Metal Construction

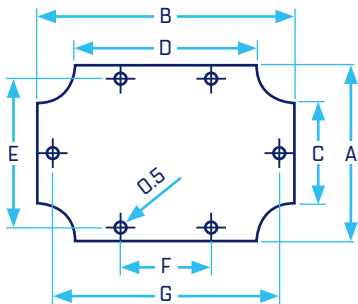
### BASE PLATE ORDERING INFORMATION

Part Number	Features
<b>SEBP07</b>	Base Plate for SE07 Enclosure
<b>SEBP08</b>	Base Plate for SE08 Enclosure
<b>SEBP09</b>	Base Plate for SE09 Enclosure
<b>SEBP10</b>	Base Plate for SE10 Enclosure

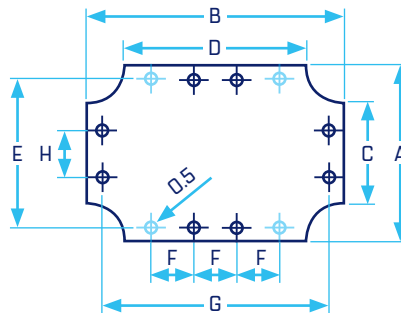
### BASE PLATE DIMENSIONS (mm)

Part Number	A	B	C	D	E	F	G	H	I
<b>SEBP07</b>	130	170	80	120	117	55	157	-	-
<b>SEBP08</b>	178	222	122	166	160	60	210	55	-
<b>SEBP09</b>	207	287	150	230	195	62	275	62	-
<b>SEBP10</b>	282	362	230	250	262	80	345	62	62

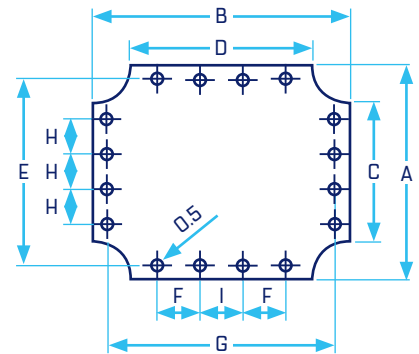
**SEBP07**



**SEBP08/09**



**SEBP10**



*SEBP08 has 8 fixing holes (shown in dark blue).  
SEBP09 includes the additional two fixing holes  
on top and bottom (shown in light blue) giving a  
total of 12 fixing holes.*